

brother® At your side.

P-touch  
QL-1050

Professional Label Printer

UP TO  
**102mm/4"**  
WIDE LABELS

**300** DPI  
HIGH RESOLUTION PRINTING

PRINT SPEED  
**110mm**  
PER SECOND

UP TO  
**69 Labels**  
PER MINUTE\*  
\* Standard Address Labels



**IDEAL FOR USE IN:**

- Logistics and Warehouse
- Packaging Industry
- Hospitality & Events Management
- Medical & Healthcare
- Manufacturing & Production Facilities
- Offices



Always at your side

P-touch

At your side.  
brother®



## Features

- High speed printing of quality labels
- 102mm / 4" print width
- Print speed of up to 110mm/second
- Built-in automatic cutter
- Self-cleaning printhead
- Support for over 20 different sized die cut and continuous length label rolls
- Label design software supplied as standard
- Easy to install rolls
- Choice of connection by USB, RS-232 serial or by the optional PS-9000 network print server
- Choose from a variety of built-in fonts and barcodes

The QL-1050 is the newest addition to the Brother range of Professional Label Printers and boasts many excellent features, including a wide, high-resolution print head, dual interfaces and a durable built-in cutter.

Brother labels are available in a wide choice of widths and sizes, either as a continuous length roll that can be cut to your required length (from 25mm to 3 metres), or the more standard die-cut labels. Our paper labels have a special coating applied to help prevent against accidental marks or scratches. Our durable plastic film labels have a strong resistance to tearing, and the fine gloss finish on them, makes them ideal for temporary signage.

All our rolls are mounted on a special roll guide. This ensures that the labels are installed correctly and also tells the machine and software which size of label is currently installed. They cannot be inserted upside down, and the guide ensures that each label is printed straight, whatever size of label you produce. ***It couldn't be easier.***

### Perfect for a wide range of uses:

Barcode printing  
Shipping and Postage  
Temporary or Indoor Signage  
Visitor & Event badges  
"Best Before / Use By" labels  
Office files, folders and organisation





## Software for all types of users

Brother supplies its label printing software in the box, at no additional cost. With the QL-1050, three programs are included. Choose the best program for your particular labelling application from the following software:

- A simple “Highlight, click and print” Add-In for popular Microsoft Office applications
- “Address Book” for shipping and postage labels
- P-touch Editor advanced label design software

P-touch Editor is a desktop publishing program specifically developed for the QL-1050. Some of the main features of this powerful program include:

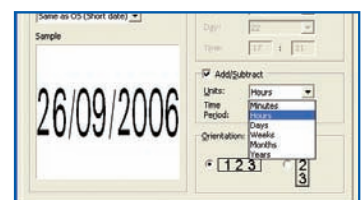
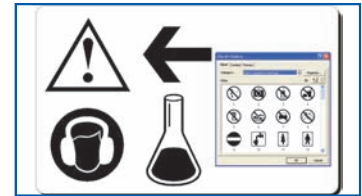
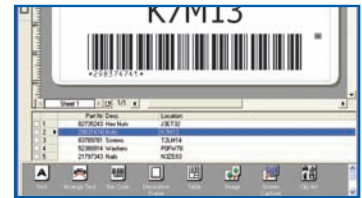
**BARCODES** - 17 industry standard barcode protocols, including 2D barcodes.

**DATABASE CONNECTION** - Connect to Microsoft Excel, Access or CSV file to print larger quantities of labels automatically – ideal for warehouses, logistics and stock control.

**CLIP ART/SYMBOLS** - Hundreds of clip-art images are included, perfect when using the continuous length rolls for signage purposes.

**GRAPHIC IMAGE IMPORT** - Support for most of the popular graphic image formats, which include jpg, bmp, tif and png files, enabling you to include your company logo or specialist symbols on your labels.

**AUTOMATIC DATE/TIME PRINTING** - Add one or more time and date to your label to show when the label was printed, or you can even let the software calculate and print a future date or time automatically, every time you print. Ideal for laboratory labels to show best before or use by expiry information.



## Solutions for advanced users

### B-PAC SDK

Add label printing to your existing Windows software with the optional b-PAC SDK (Software Development Kit). Designed for programmers and software developers, b-PAC is a powerful tool that places text and barcodes onto your label design and sends this to the Windows printer driver. This is available as a download from <http://solutions.brother.com>.

### DIRECT CONNECTION TO OTHER DEVICES

QL-1050 can print independently, without the need of a PC. Design a label and upload it to the memory of the QL-1050, then connect a compatible device directly to the serial port without the need for a computer (such as a barcode scanner or test equipment). Whenever the machine receives the text or barcode number it will add the data onto the required design and print your label. If needed, add special commands to change the printing options.





# DANGER!

**STANDARD PAPER LABELS**

Our paper labels have a special top coat applied, making them more durable than standard paper labels.

DK-22606 | 62mm x 15.24m

**REMOVABLE PAPER LABELS**

Easily removed from the item leaving no adhesive residue or other marks.

**PLASTIC FILM LABELS**

An excellent solution for temporary signage and when paper labels are not strong enough. Use the tear resistant plastic film labels in areas of occasional moisture and abrasion. Available in white, yellow and clear.



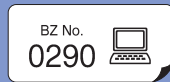
DK-11241 | 102mm x 152mm



DK-11202 | 62mm x 100mm



DK-11208 | 38mm x 90mm



DK-11209 | 29mm x 62mm



DK-11203 | 17mm x 87mm



DK-11204  
17mm x 54mm



DK-11218  
24mm Ø



DK-11219  
12mm Ø

## QL-1050 Technical Information

**Printer Hardware**

<b>Print Method</b>	Thermal Line Printing
<b>Maximum Label Width</b>	102mm (4")
<b>Maximum Print Height</b>	98.6 mm
<b>Maximum Label Length</b>	3 metres (Windows) / 1 metre (non-Windows)
<b>Print Resolution</b>	300 dpi
<b>Maximum Print Speed</b>	110 mm / sec   69 labels/minute*
<b>Cutter Sensor</b>	Yes
<b>Cover Open Sensor</b>	Yes
<b>Roll Size Detection</b>	Yes
<b>Interfaces</b>	USB, Serial(RS-232C).
<b>Dimensions</b>	170mm(W) x 220mm(D) x 147.5mm(H)
<b>Weight</b>	1.7kg (without DK roll)
<b>Power</b>	Internal Switched Power Supply – 100V-220V AC
<b>Colour</b>	Black/Silver
<b>Total/User Memory</b>	4MB/2MB
<b>Print Head MTBF**</b>	30km / 1300 die-cut rolls
<b>Cutter MTBF**</b>	150,000 cuts (continuous rolls) 300,000 cuts (die-cut rolls)

\* Standard Address Labels \*\* (Figures calculated on Brother internal testing, no guarantees implied)

**Included Accessories**

- QL-1050 label printer
- 2 x DK starter rolls comprising:
  - DK11241 40 large shipping labels (102mmx152mm)
  - DK22205 8m continuous paper tape roll (62mm x 8m)
- Label catch tray
- USB cable
- AC power cord
- CD-ROM (Software/Driver/User Guide)
- Quick start guide
- Label supplies guide

**Built-In Firmware**

<b>Command Types</b>	Raster, ESC/P, Label Template
<b>Built in Fonts</b>	Bit-map fonts: Helsinki, Brussels, Letter Gothic Bold, San Diego, Brougham Outline fonts: Helsinki, Brussels, Letter Gothic
<b>Character Size</b>	Bitmap fonts: 24dots, 32dots, 48dots Outline fonts: 33dots - 400dots (22sizes)
<b>Font Style</b>	Bold, Outline, Solid, Shadow, Italic, Vertical
<b>1D Barcode Support</b>	Code39, EAN13, EAN8, UPC-A, UPC-E, Codabar, ITF, Code128, EAN128
<b>2D Barcode Support</b>	QR Code, Micro QR, PDF417, Data Matrix

**Direct Connection & ESC/P Template Support**

<b>Max Templates</b>	99
<b>Max Lines/Template</b>	1,000
<b>Character code set</b>	Windows 1252 Western Europe Windows 1250 Eastern Europe Standard character code
<b>Changeable Data</b>	Text, Barcode
<b>Object Rotation</b>	Yes
<b>Multiple line support</b>	Yes
<b>Horizontal text alignment</b>	Yes
<b>Text layout formatting</b>	Shrink to Fit, Clip text, Long text, Automatic length, Free size
<b>Cutter options</b>	Auto cut (Including cut at any number of labels) Cut at end

System Requirements PC	
Operating System	Windows 2000 Pro / XP Pro / XP Home
CPU	Minimum Intel Pentium 266 MHz Recommended 700MHz or higher
Memory (RAM)	128MB or more
Hard Disk Free Space	70MB or more
Interface	USB 1.1 or later specification/RS-232 9 pin D-Sub
Monitor	SVGA with high colour graphics card
Other	CD-ROM drive for installation

System Requirements Mac	
Operating System	OS 10.1-10.4.7 (PowerPC) OS 10.4.4-10.4.7 (Intel)
CPU	PowerPC or Intel
Interface	USB 1.1 or later specification
Other	CD-ROM drive for installation

Contact:

